

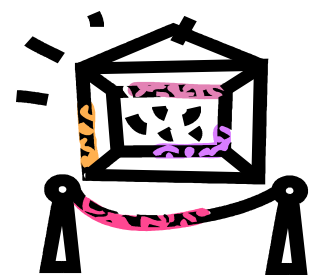
Finkelstein Memorial Library

Materials Loan Policy and Fees

ADULT/YA BOOKS



ITEMS	LOAN PERIOD/LIMIT
Express Books	7 days/2 titles
NEW Fiction, Nonfiction, Mystery, Sci-Fiction, PBs	14 days 5/subject/author (H)
OLDER Fiction, Nonfiction, Mystery, Mystery, Sci-Fiction, LP, PB	28 days 5/subject/author (H)(R)
Magazines	14 days
MUSEUM PASSES (FML patron 18+yrs of age)	3 days/ 2 different museums NONRENEWABLE



ADULT / YA OVERDUE FEES

.10cents/day/ Books/ Magazines/CDs / Audio Books

2.00/ day Games

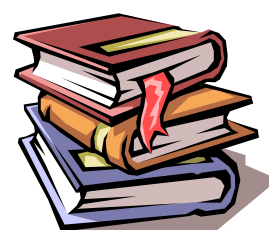
\$8.00 Max. Fine/ Books/ CDs

\$2.00 Max. Fine/ Paperbacks/ Magazines

\$10.00/day /MUSEUM PASSES

\$30.00 Maximum Fine/ MUSEUM PASSES

CHILDREN'S BOOKS



ITEMS	LOAN PERIOD/ LIMIT #
New Books,GNs & Holiday,Books	14 days/ 3 subject/author (H)
Magazines	14 days/3 titles
Older Books & all Paperbacks	28 days/ 3 sub/author (H)(R)

CHILDREN'S OVERDUE FEES

.05cents /day/ Books/ Magazines/ CDs/Audio Books/PBs/Books&CD Kits

\$4.00 Maximum Fine/Books/PBS

\$2.00 Maximum Fine/ Magazines

\$8.00 Maximum Fine/CDs/Books & CD Kits

ADULT/YA AUDIOVISUAL



ITEMS	LOAN PERIOD/LIMIT #
NEW DVDs & Blu-rays	3 days/ 2 each (H)
OLDER DVDs & Blu-rays	7 days/ 3 each (R*)(H)
All Nonfiction DVDs	7 days/ 3 titles (R*)(H)
NEW Books on CD & MP3s	14 days/ 3 titles (H)
OLDER Books o CD & MP3s	28 days/ 5 titles (H)(R)
All Compact Discs (music)	14 days/ 5 titles (H)
All CD-ROMs & DVD-ROMs	14 days/ 2 titles (H)
Games	7 days/ 1title
Kindle / Nook (FML patron 18+yrs of age)	14 days / 1 device

(R)- renewable twice for 14 days

(R*) - renewable once for 3 days

(H)- holds may be placed

\$1.00/day /Blu-rays/DVDs / CD-ROMs, DVD-ROMs

\$12.00 Max. Fine/ Blu-rays/DVDs /CD-ROMs, DVD-ROMs

\$24.00 Max. Fine/ Audio Books

\$30.00 Max. Fine / Games

\$5.00/day/ Kindles /Nooks (Full replacement charged after 4 days)

CHILDREN'S AUDIOVISUAL



ITEMS	LOAN PERIOD/ LIMIT #
DVDs, CD-ROMs	7 days/ 3 titles (H)
CDs, Audio books/Book&CD Kits	14 days/3 titles (H)
Games	7 days/ 1 title

(R)- renewable twice for 14 days

(H)- holds may be placed

\$1.00/ day /DVDS /CD- ROM/ Games

\$12.00 Maximum Fine/DVDS/CD-ROMs

\$20.00 Maximum Fine/ Audio Books

\$24.00 Maximum Fine/ Games

OVERDUE AND LOST ITEMS

Total maximum number of items checked out/card is 50.

Patrons will be given a receipt with due dates for the items borrowed.

Patrons with fines or charges of more than \$5.00 will not be allowed to check out until their record is below \$5.00.

No fines are charged when the library is closed.

The maximum fine should not exceed one half the replacement cost of an item.

If an item is not returned after 6 weeks from the due date, it will be considered lost and will be billed for the replacement cost. All borrowing privileges will be suspended until the billed item has been checked in or paid for.

Effective Sept. 10, 2012, a refund will not be issued once an item has been paid for.

A Library Card is to be used ONLY by the patron to whom it is issued, as is stated on the card.